



Erasmus+

#RoleModel #Erasmusplus

erasmusplus.it

ROLE MODEL

SHARING ERASMUS+
STORIES AND VALUES

Inclusion
Sustainability
Excellence
Resilience

INDIRE
ISTITUTO
NAZIONALE
DOCUMENTAZIONE
INNOVAZIONE
RICERCA EDUCATIVA



Ministero dell'Istruzione



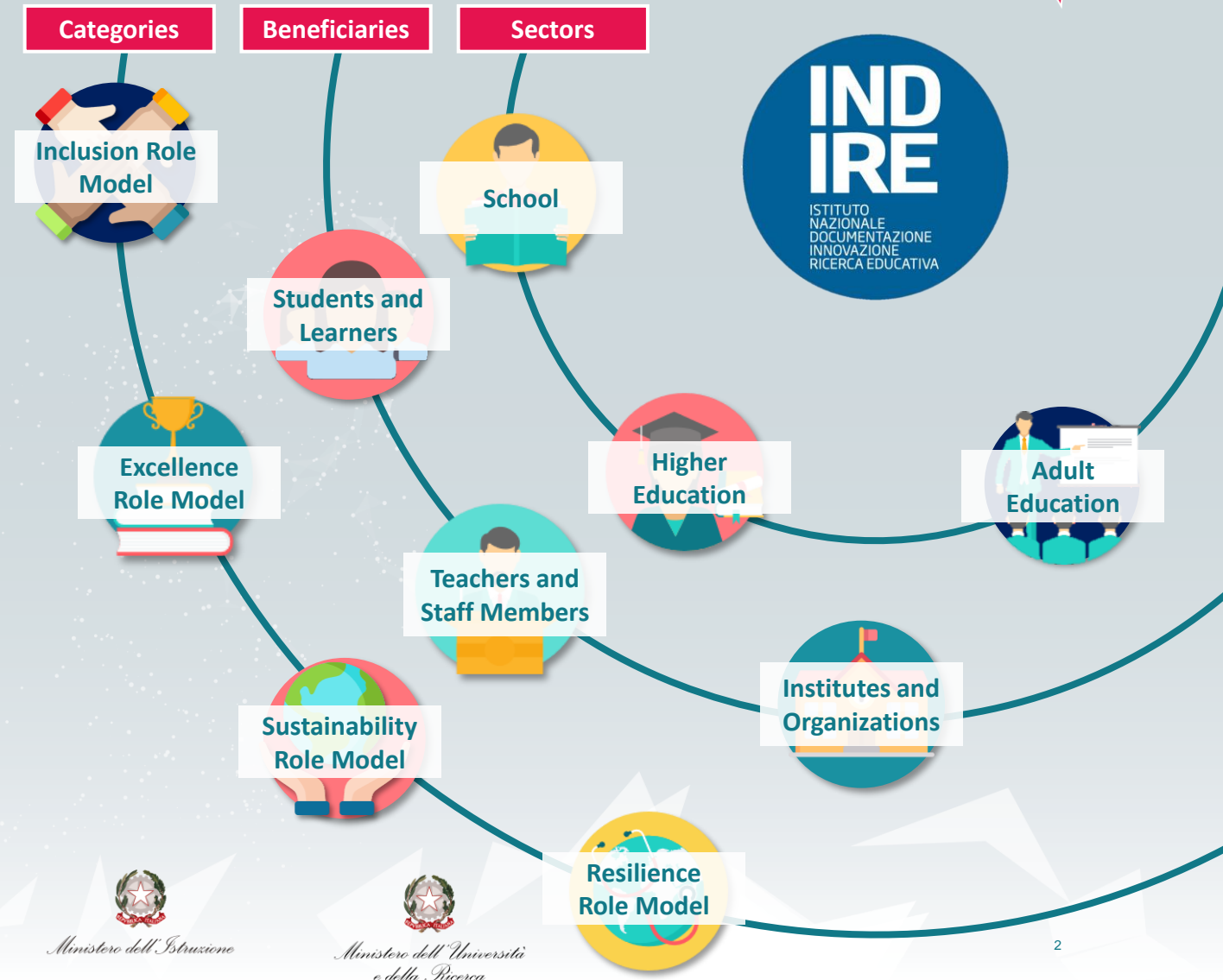
*Ministero dell'Università
e della Ricerca*

A ROLE MODEL

Erasmus+ National Agency identifies **Role Models** as representative persons and experiences that:

- **took advantage of Erasmus+ Programme opportunities** in order to excel in their studies, in their professional development and/or in some specific fields (i.e., digital, sustainability, social inclusion);
- **used the Programme to outdo and face difficulties**, turning them into personal growth and development opportunities.

Role Model categories are in line with **Horizontal Priorities promoted by the European Commission**. The National Agency will add more categories to those already defined by **expanding the Role Model Network** through new calls for participation and scouting on the web, and after discussion moments with other NAs Representatives.



THE ROLE MODEL MANAGING TOOL


The **Role Models** become part of the **National Agency Role Model Database**.

The **Role Model Database** is the tool used by the NA in order to create the **Network of Role Models**. The main purpose is to map all the **past** (selected during the call 2018 and 2020), **present, and future Role Models**. The Role Model Network will be essential for policy and strategy evaluation of territories by National Agency.

Currently, the Network is composed by **75 Role Models** coming from **all over Italy**.



Management tool



The screenshot shows the web interface of the INDIRE National Agency Role Model Database. The header includes the INDIRE logo (Istituto Nazionale Documentazione Innovazione Ricerca Educativa) and navigation links: Home, Studenti o Discenti, Docenti o Staff, and Istituti o Atenei. A banner on the right features the 'ROLE MODEL' logo and the text 'SHARING ERASMUS+ STORIES AND VALUES' with icons for Inclusion, Interdisciplinary, Excellence, and Resilience. Below the header, there is a 'FILTRI' (Filters) section with three dropdown menus: 'Settore di esperienza' (Settore di esperienza), 'Regione - Provincia' (Regione - Provincia), and 'Tipologia Role model' (Tipologia Role model). All three dropdowns are currently set to 'Tutte'. Below the filters, the section is titled 'Studenti o Discenti' and contains the text: 'Nel seguito si ha una estrazione degli studenti o discenti che hanno partecipato, candidandosi come Role Model, alla campagna di comunicazione compilando un questionario'.

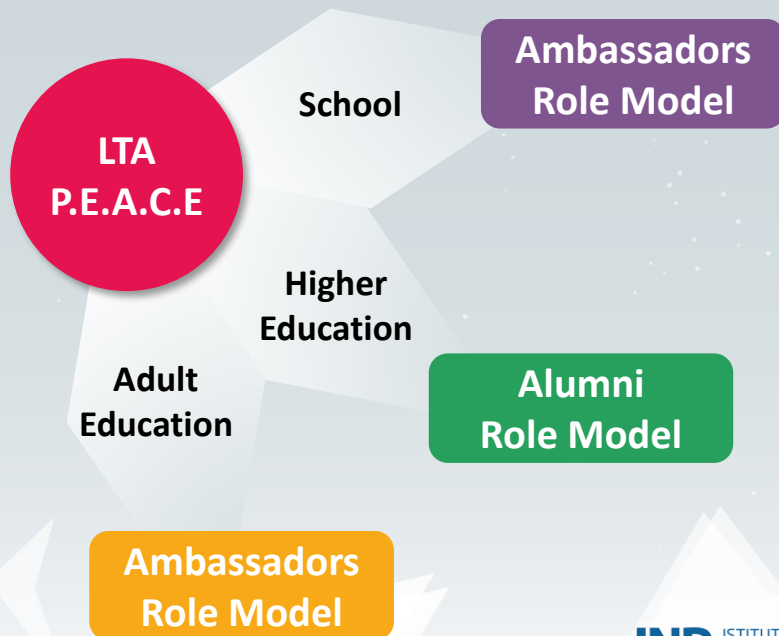
ROLE MODELS ACTIVITIES

- **Participation in event organized by the National Agency**
 - Support and facilitation sessions and activation of initiatives
 - Activities of story sharing during thematic events
 - Involvement in sensibilization initiatives on Erasmus+ Programme Horizontal Priorities
- **Support the National Agency and beneficiaries**
 - Support to the National Agency in organising thematic events and activities
 - Support to Institutes in organising thematic events and activities
 - Support to Institutes in promoting the Erasmus+ Programme during events and initiatives

CONSTITUTION OF A STRUCTURED NETWORK

The Role Model network is going to be part of the bigger picture defined by the LTA “**PEACE-Participation: Erasmus Alumni for Civic Engagement**” coordinated by the Italian National Agency.

The LTA aims to spread **the European Civic Engagement values** and the message of the **importance of a multicultural and multilingual Europe**, fostering synergies between new and existing networks of actors, stakeholders and beneficiaries.



The LTA will start a programme of:

- **training** for the actors of the different networks
- international and local **dissemination activities** on civic engagement
- **Integration at an European level** of the different networks